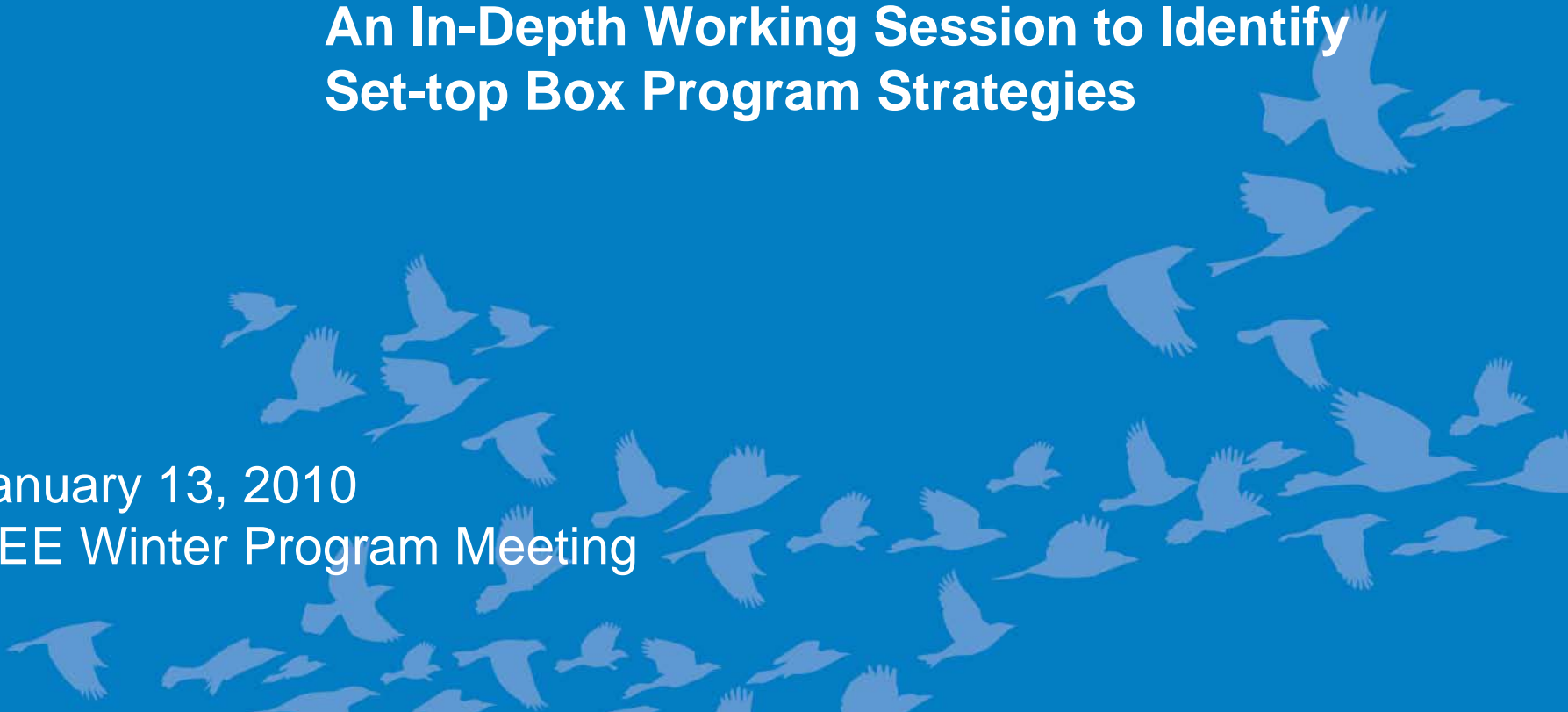




Consumer Electronics Breakout Session

An In-Depth Working Session to Identify
Set-top Box Program Strategies

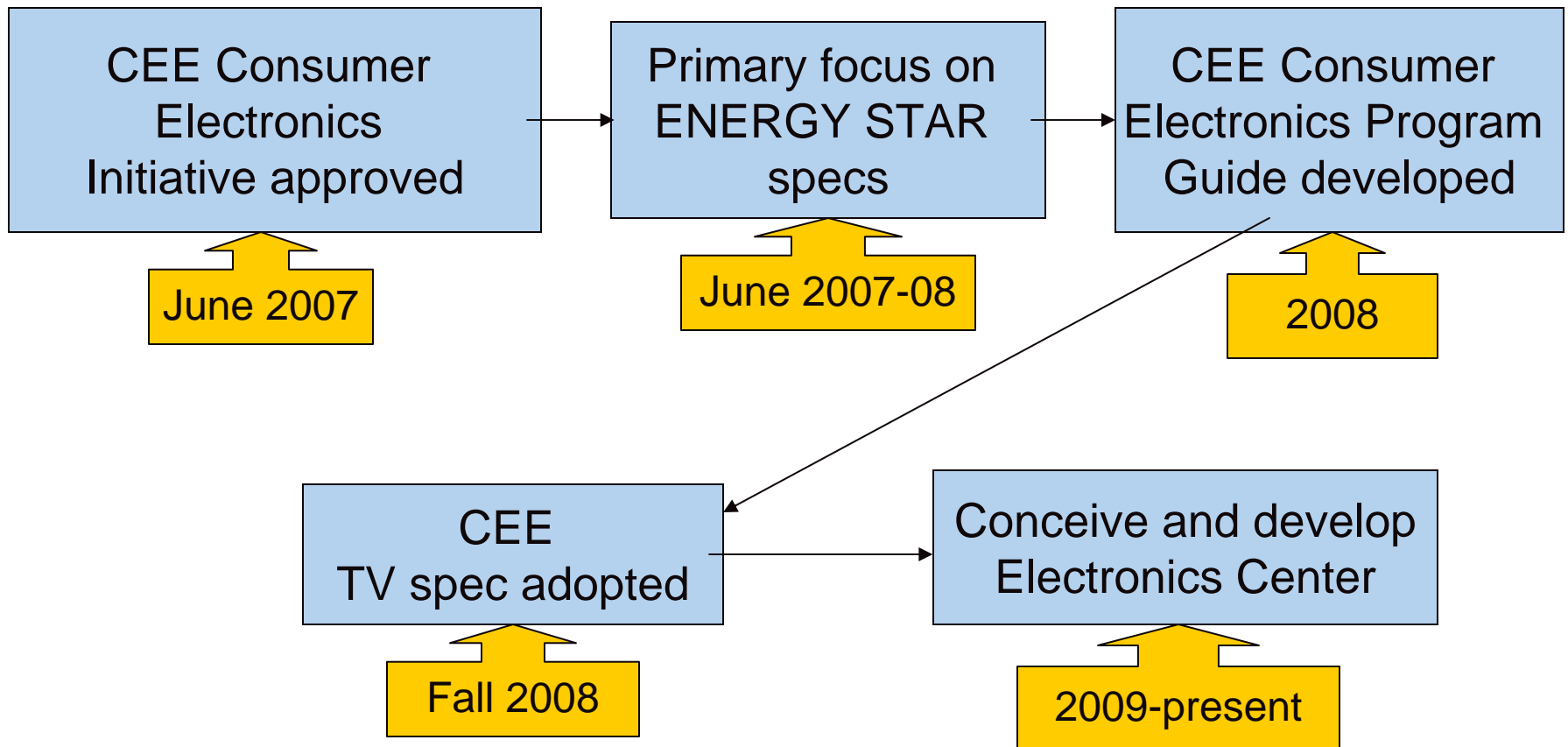
January 13, 2010
CEE Winter Program Meeting



Agenda

- ▶ 3:30 Welcome and introductions
- ▶ 3:45 Presentations
- ▶ 4:45 Small group work
- ▶ 5:15 Wrap up and next steps
- ▶ 5:30 Adjourn to reception

How did we get here?



Small Groups

- ▶ Upstream/manufacturer
- ▶ Midstream/service provider (retailer?)
- ▶ Downstream/consumer

Discussion Questions

- ▶ What program design approaches could yield energy savings for energy efficiency programs?
- ▶ What are the possible advantages of each approach?
- ▶ What are the potential downsides?
- ▶ What information is needed to further evaluate these approaches?
- ▶ What work is best pursued collaboratively and what is best suited to an individualized approach?