

# CEE's Commercial Lighting Initiative

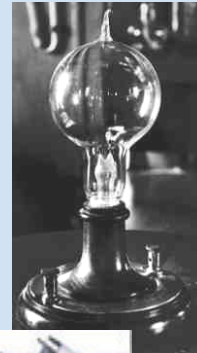
Susan Loucks  
Program Associate, CEE  
June 14 2006



Working Together, Advancing Efficiency

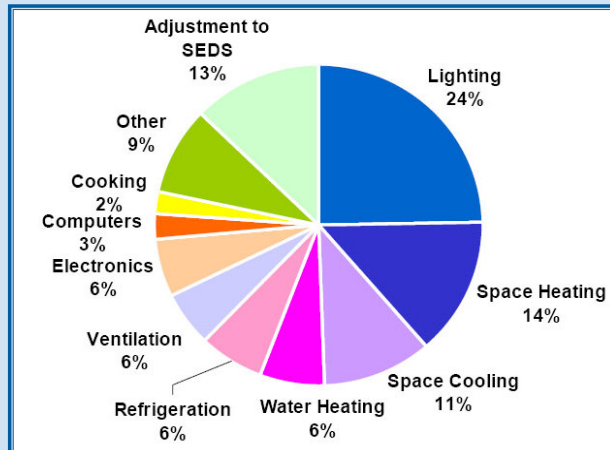
## Committee Progress- An Overview

- Developing the HP T8 Specification
- Status of Specification
- Current Efforts and Next Steps



Working Together, Advancing Efficiency

## Commercial Buildings Energy End Use

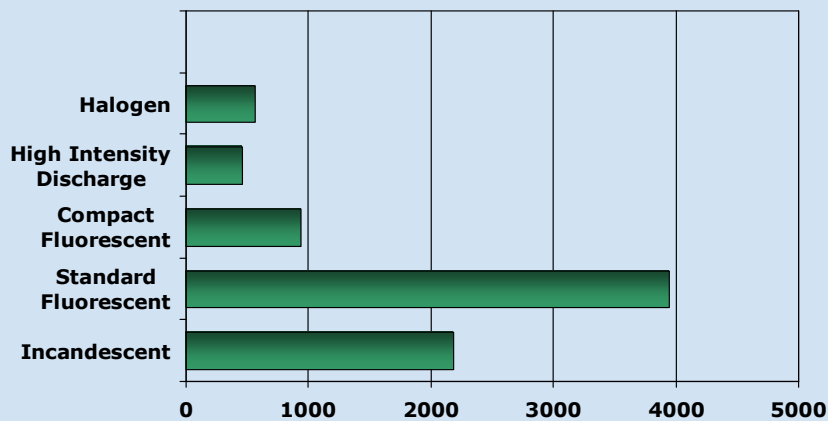


Source: 2005 EERE Buildings Energy Data Book



Working Together, Advancing Efficiency

## Commercial Lighting Equipment Types



In thousands of buildings – 2003 CBECS data



Working Together, Advancing Efficiency

## Energy Savings and Market Status

- High Performance T8's provide 20% energy savings over standard T8's, and 40% savings over T12's.
- Market share is increasing, but still low (~10% in 2003).
- Market availability through all major manufacturers.



Working Together, Advancing Efficiency

## An Enlightened Choice

Market confusion on the definition of “high performance” allowed CEE to build an initiative with significant impact.



Working Together, Advancing Efficiency

## Committee Goals

- Maximize energy savings
- Promote market availability
- Increase consumer understanding
- Increase non-energy benefits
- Impact cost factors through increased penetration
- Promote, where possible, high-quality lighting design practice



Working Together, Advancing Efficiency

## Committee Timeline



Working Together, Advancing Efficiency

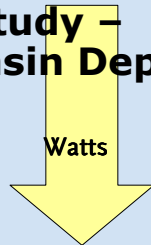
## Member Programs

Bonneville Power Administration  
BC Hydro  
Efficiency Maine  
Efficiency Vermont  
Energy Trust of Oregon  
Eugene Water and Electric Board  
Focus on Energy  
Long Island Power Authority  
Los Angeles Department of Water and Power  
National Grid  
New Jersey Board of Public Utilities  
New York State Energy Research and Development Agency  
Northeast Utilities  
NSTAR  
PacificCorp  
Public Service Electric & Gas  
Tacoma Power  
WE Energies  
Xcel Energy



Working Together, Advancing Efficiency

## Case Study – Wisconsin Department of Administration



❖ Goal of reaching EPACT qualifying levels



Working Together, Advancing Efficiency

## **Case Study – Wisconsin Department of Administration**

### **Overall Approach**

- Specification for State Office Buildings
- Master specifications for State – included in State energy bill
- WE Energy provides incentives for consumers



Working Together, Advancing Efficiency

## **Addressing Market Barriers**

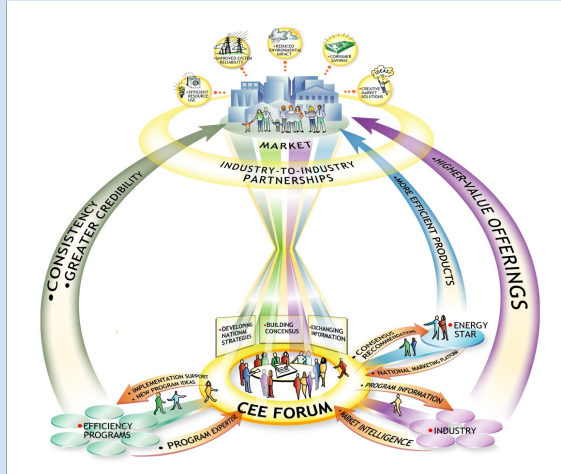
- Higher first cost
- Understanding of the product
- Availability and lead time
- Difficulty in specifying the products



Working Together, Advancing Efficiency

## Moving the Market

- Understanding roles
- Building relationships



Working Together, Advancing Efficiency

## The Path Forward

Reduced wattage T8 Lamps

LAMP	Wattage	Mean Lumens	Lamp Life (Instant Start)
HP T8	32	3100	24K
Reduced Wattage T8	30	2675-2710	20-24K
Reduced Wattage T8	28	2562-2590	20-24K



Working Together, Advancing Efficiency

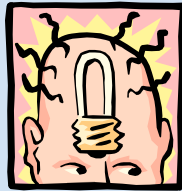
## The Path Forward

Questions include:

- How do we continue to advance market demand for HP T8's through our specification?
- What should we focus on next?



Working Together, Advancing Efficiency



Don't Forget!  
Commercial Lighting Breakout  
Thursday, June 15 1:30-3:00  
Queen Mary room

For More Information:

Susan Loucks

[sloucks@cee1.org](mailto:sloucks@cee1.org)

617-589-3949 x205



Working Together, Advancing Efficiency