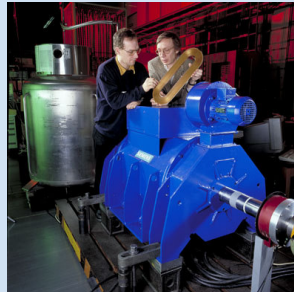


Update on Revising CEE's Premium-Efficiency Motor Specification

CEE Program Meeting
Boston, MA
June 14-15, 2006

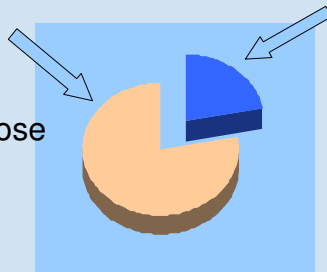


Working Together, Advancing Efficiency

Motors Under Consideration

Motors Currently Covered
by CEE Spec:

- 1 – 200 Hp
- General Purpose
- ODP, TEFC
- Low voltage



Additional Motors
Covered by NEMA
Premium®:

- **250 – 500 Hp**
- Special & Definite Purpose
- All Open, All Closed
- Medium voltage



Working Together, Advancing Efficiency

Update

- ✓ Research on large (250-500 hp), low-voltage, general purpose motors complete.
- ✓ Committee supports adding these motors to the CEE premium motor specification.
- ✓ To avoid misapplication, the committee has recommended that program guidance be included in the revision.
- ❑ Guidance outline being drafted by the committee.
- ❑ Research on remaining categories of motors underway with Washington State University.



Working Together, Advancing Efficiency

Next Steps

Large low-voltage motors:

- Complete draft guidance, vet with CEE Motors & Motor Systems Committee and then with motor industry allies.
- Develop a recommendation for consideration by CEE's Board of Directors

Other motor categories:

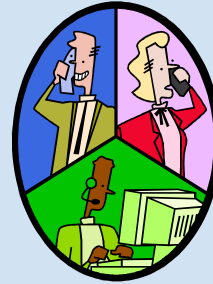
- Complete analysis on remaining categories of motors; convene committee to discuss results.



Working Together, Advancing Efficiency

Next Committee Conference Call

Date: Tuesday, June 20
Time: 2:00 pm Eastern Time
Call-in #: 973-807-0420
Access Code: 5547



Working Together, Advancing Efficiency