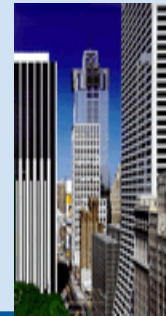


Commercial Whole-Building Performance: Progress and Plans

Denise Rouleau, Senior Program Manager
CEE Quarter Meeting
June 14, 2006



Working Together, Advancing Efficiency

Whole Building Performance Effort

- Goal:
 - To develop the infrastructure to encourage and enable effective implementation of whole-building programs for the commercial sector.

- Strategy:
 - Provide program design guidance
 - Build industry partnerships
 - Increase the acceptance of approach by PUC's



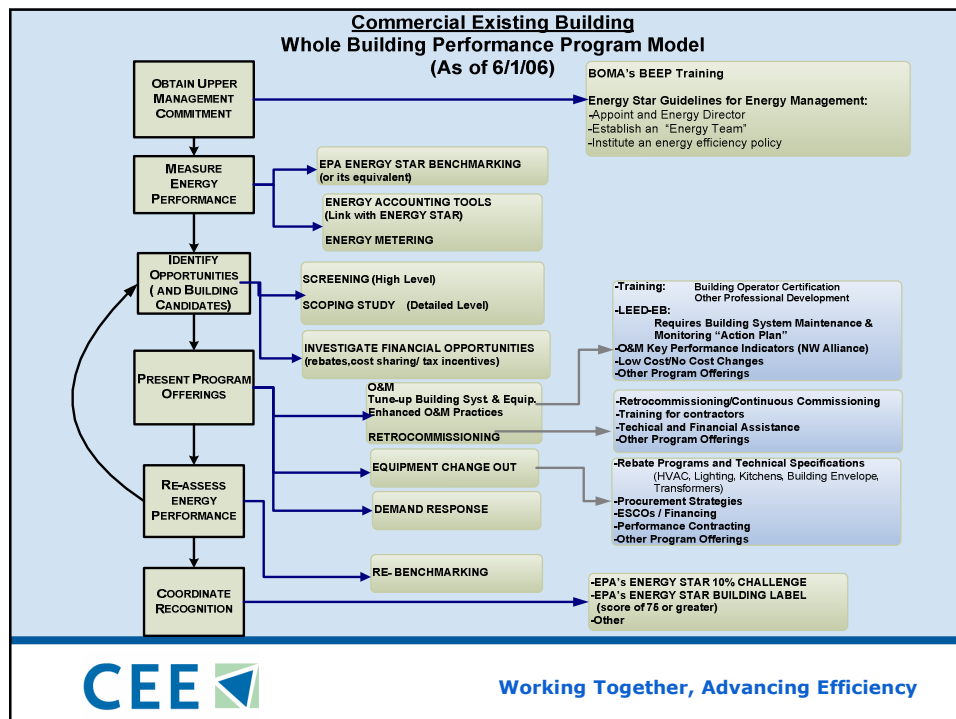
Working Together, Advancing Efficiency

Key Accomplishments in 2005

- Endorsed Energy Star Building criteria as goal for an energy efficiency building
- Developed program model



Working Together, Advancing Efficiency



Working Together, Advancing Efficiency

Whole Building Performance 2006 Progress & Plans

- Program Guidance
 - Established schedule to develop a “Program Model Guide” and beginning work on definitions and strategies
 - Developed a Pilot Subcommittee which met 3 times to discuss program implementation issues
 - Coordinated with ENERGY STAR on case studies and providing feedback on the benchmarking tool revisions



Working Together, Advancing Efficiency

Whole Building Performance 2006 Progress & Plans

- Program Guidance
 - Commercial Building Tax Incentives
 - Monitored for the release of rules/guidance from the IRS and will educate members on the recently published guidance
 - Participated on the NEMA coalition
- Industry Partnerships
 - Began exploring an Industry Partner strategy
 - Working with the BOMA Foundation, the Northwest Energy Efficiency Alliance and NYSERDA to develop a northeast and northwest pilot effort with BOMA's Energy Efficiency Program



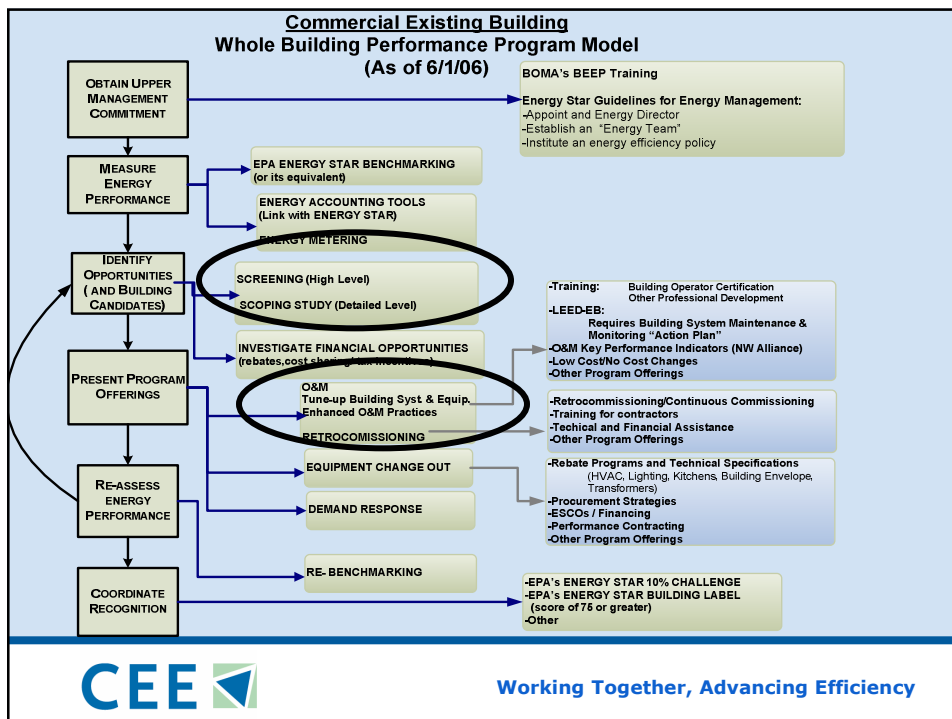
Working Together, Advancing Efficiency

Whole Building Performance 2006 Progress & Plans

- PUC's
 - Training at the National Association of Regulatory Utility Commissioners (NARUC)
 - Collecting common data across pilots/programs



Working Together, Advancing Efficiency



Working Together, Advancing Efficiency

Your Invited



Breakout Session I

Whole-Building Performance: Exploring Scoping and Screening Services

Breakout Session II

Whole-Building Performance: What Industry Partnerships Would Be The Most Valuable?



Working Together, Advancing Efficiency